



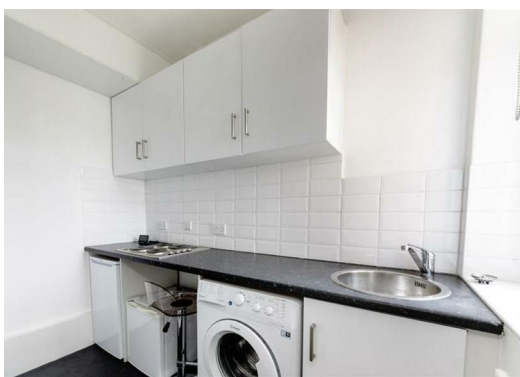
2A Spital Terrace, Newcastle Upon Tyne, NE3 1UT Offers in excess of £110,000

Goodmove are delighted to present this one bedroom first floor apartment to the market.

Accommodation is well presented throughout and briefly comprises an entrance hall, bright living room, modern kitchen, one double bedroom with built in wardrobes and a bathroom.

Situated within striking distance to Gosforth High Street, Spital Terrace, tucked just off Rothwell Road and Alwinton Terrace is ideally placed close to outstanding local schooling, and the shops, cafes and amenities of Central Gosforth. The property is also well situated close to excellent local transport links with both South Gosforth and Regent Centre Metro Stations are short walk away.

The property has been attractively priced and we invite all buyers in a position to proceed to view. Please call for more information.



Leasehold Information

170 years remaining on the lease
Ground rent: £10 per annum
Maintenance charge: £0

This information is provided by the vendor and should be verified during the conveyancing process.

Energy Efficiency Rating		
	Current	Potential
Very energy efficient - lower running costs		
(92 plus) A		
(81-91) B		
(69-80) C		
(55-68) D	65	
(39-54) E		
(21-38) F		
(1-20) G		
Not energy efficient - higher running costs		
England & Wales EU Directive 2002/91/EC		

Environmental Impact (CO ₂) Rating		
	Current	Potential
Very environmentally friendly - lower CO2 emissions		
(92 plus) A		
(81-91) B		
(69-80) C		
(55-68) D		
(39-54) E		
(21-38) F		
(1-20) G		
Not environmentally friendly - higher CO2 emissions		
England & Wales EU Directive 2002/91/EC		

